

<p>Trail Features</p> <ul style="list-style-type: none"> Parking Area Trailhead Access Point Viewpoint Trailhead Sign with Map Hiking Trail Mixed-use Trail (Hike/Bike) Trail Section Length (kms) 	<p>Base Map</p> <ul style="list-style-type: none"> Forestry Gate Tower Mainline Gravel Road Non-active Road Paved Road Forest Reserve Area 	<p>Elevation Model</p> <ul style="list-style-type: none"> 0-100m 100-200m 200-300m 300-400m 400-500+m <p>Drawn By: North Cowichan Forestry Dept Date Revised: April 15, 2015 Projection: UTM Zone 10</p>
---	---	---

TRAIL INFORMATION							Description	
Trail Name	Trail Type	Difficulty	Surface	Trail Width	Length (km)	Elevation Gain (m)		
Maple Way	Mixed-use		Gravel surface double track	5m	2.5	192	9	Easy walking machine-built trail surfaced with compacted gravel. Begins at Osborne Bay Park and meanders up the North side of Maple Mountain with connections to the blue hiking trail and Chilco Rd.
Blue Trail	Hiking		Unsurfaced single track	30-50cm	5.0	156	18	Steep and physically challenging hiking trail that connects Maple Bay and Croton. This trail offers panoramic views of Sansum Narrows and Stuart Channel.
Pink Trail	Hiking		Unsurfaced single track	30-50cm	3.7	481	22	Steep and physically challenging hiking trail that reaches from sea level to the peak of Maple Mountain. This trail connects to the Yellow, Blue and Orange trails.
Yellow Trail	Hiking		Unsurfaced single track	30-50cm	3.4	122	14	Steep and twisty shoreline trail with beautiful views of Sansum Narrows. Connects with Pink and Blue trails on either end.
Green Trail	Hiking		Unsurfaced single track	50-100cm	1.5	64	11	Easy walking trails through mature forest.
Southview Trail	Hiking		Unsurfaced single track	30-50cm	1.3	116	10	Moderately challenging hiking trail with a rustic bench viewpoint that offers spectacular views of the Cowichan Valley, Maple Bay and Birds Eye Cove.
Climbing Trail	Mixed-use		Unsurfaced single track	3m	4.5	360	7	A low-grade trail with multiple switchbacks winding through newly planted forest and mature Douglas-fir/Arbutus forest. This trail offers viewpoints of the Cowichan Valley and Mt. Prevost.
Upper Maple Syrup	Mixed-use		Unsurfaced single track	30-50cm	2.0	172	12	Commencing from the summit of Maple Mountain this steep, narrow mixed-use trail descends through mature forest on an uneven surface of dirt and bedrock.
Lower Maple Syrup	Mixed-use		Unsurfaced single track	1-3m	3.0	190	13	Accessible via M600, this is a physically challenging low style trail with a wider surface area than Upper Maple Syrup. This trail has steep descents, obstacles and optional technical trail features.
Solar Coaster	Mixed-use		Unsurfaced single track	50-100cm	2.5	62	9.5	A physically challenging cross-country style trail on handpacked soil that meanders up and down through a spacious Arbutus/Douglas-fir forest. Moderately challenging obstacles and rock features.
Loggers Lane	Mixed-use		Unsurfaced single track	50-100cm	1.0	20	5	A short easy trail that commences adjacent to the yellow gate at Osborne Bay Road. This trail winds through a planted deciduous and connects to the Maple Mountain Mainline and Solar Coaster.

GREEN Beginner - Gentle climbs and easily avoidable obstacles such as small rocks, roots and potholes

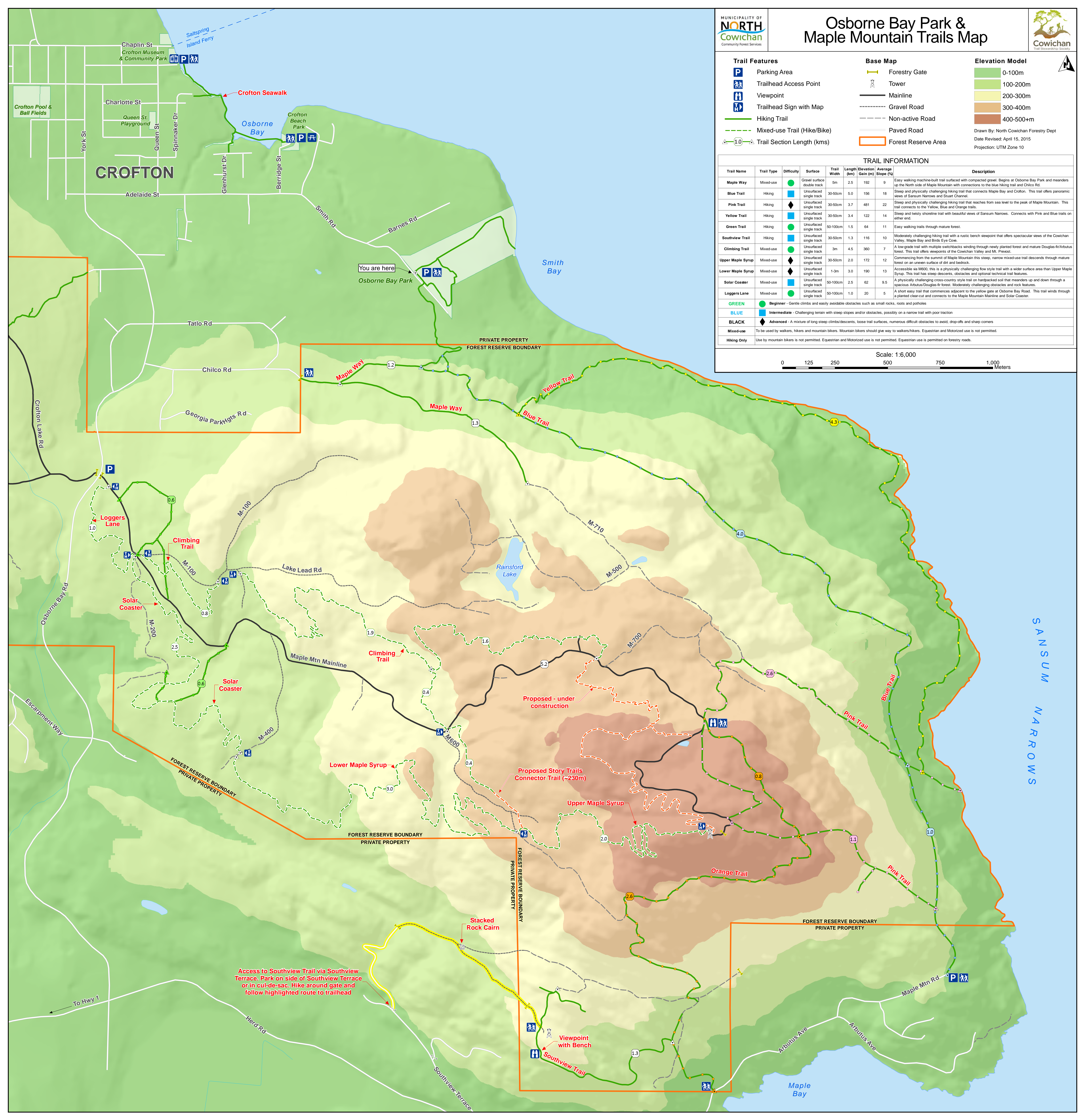
BLUE Intermediate - Challenging terrain with steep slopes and/or obstacles, possibly on a narrow trail with poor traction

BLACK Advanced - A mixture of long steep climbs/descents, loose trail surfaces, numerous difficult obstacles to avoid, drop-offs and sharp corners

Mixed-use To be used by walkers, hikers and mountain bikers. Mountain bikers should give way to walkers/hikers. Equestrian and Motorized use is not permitted.

Hiking Only Use by mountain bikers is not permitted. Equestrian and Motorized use is not permitted. Equestrian use is permitted on forestry roads.

Scale: 1:6,000
0 125 250 500 750 1,000 Meters



Access to Southview Trail via Southview Terrace. Park on side of Southview Terrace or in cul-de-sac. Hike around gate and follow highlighted route to trailhead

Viewpoint with Bench
Southview Trail

Stacked Rock Cairn

Lower Maple Syrup

Upper Maple Syrup

Proposed Story Trails Connector Trail (~230m)

Proposed - under construction

Climbing Trail

Loggers Lane

Solar Coaster

Climbing Trail

Solar Coaster

Loggers Lane

Climbing Trail

Solar Coaster

Loggers Lane

Climbing Trail

Solar Coaster

Loggers Lane

Climbing Trail

Solar Coaster

Loggers Lane

Climbing Trail

Solar Coaster